



G500XLT Quick Installation Guide

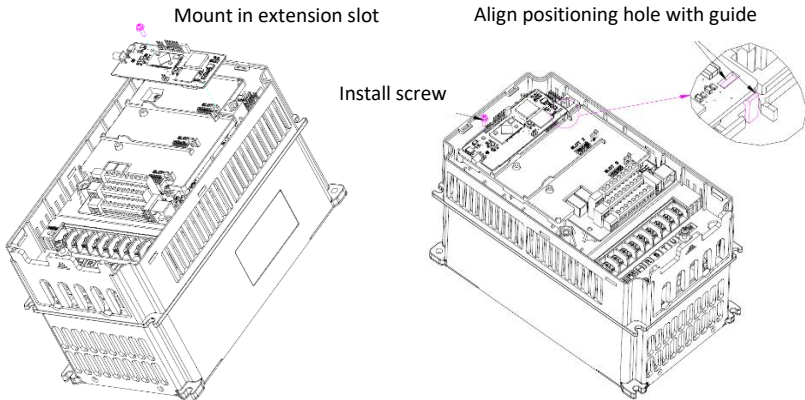
1. Configure the G500XLT's network settings

- (1) Required items
 - Windows PC
 - Galt Electric Network Parameter Utility (NPU)
 - USB Mini-B Cable
- (2) Download the NPU from the G500XLT product page
- (3) Extract and run the NPU software
- (4) Connect the USB cable between the PC and G500XLT
- (5) Select the desired protocol and configure the card's network settings appropriately for your network
- (6) Click the Submit button

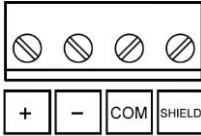


2. Install the G500XLT extension card

- (1) Power off the inverter
- (2) Remove the inverter's front cover
- (3) Securely mount the option card in any extension card slot on the inverter's control board
- (4) Install and tighten the mounting screw

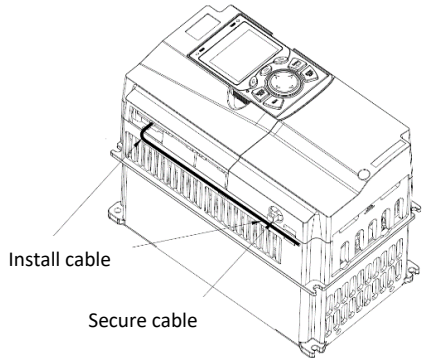
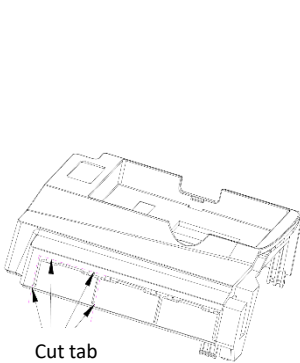


- (5) Wire the RS-485 network cable to the option card's RS-485 terminal block.



Terminal	Network Connection
+	RS-485 Positive (Non-Inverting) Data Signal
-	RS-485 Negative (Inverting) Data Signal
COM	RS-485 Common-Mode (0V) Reference
SHIELD	Cable Shielding Daisy-Chain Point This terminal has no internal connection

- (6) Cut off the corresponding tab on the side of the inverter's front cover and open the knockout for cabling
 (7) Route the RS-485 cable out of the inverter along with other control-level wiring



- (8) Reinstall the inverter's front cover and secure the cable(s)

3. Installation is complete

4. Additional G500XLT documentation, software, and other resources can be found on the G500XLT product page at:

<http://www.galt.iccdesigns.com/g500xlt>

5. Refer to the G500XLT Instruction Manual for additional details or contact Galt Electric for technical support