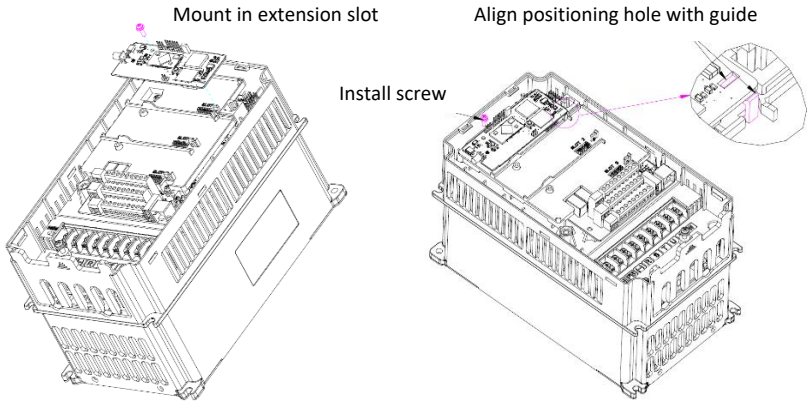
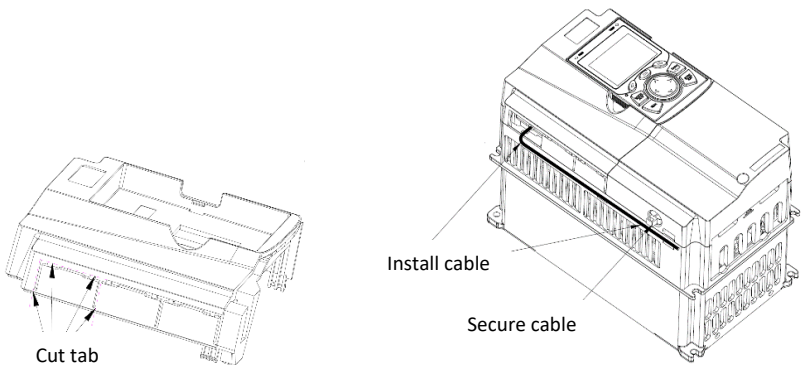


1. Install the G500ETH interface card

- (1) Power off the inverter
- (2) Remove the inverter's front cover
- (3) Securely mount the option card in any extension card slot on the inverter's control board
- (4) Install and tighten the mounting screw



- (5) Cut off the corresponding tab on the side of the inverter's front cover and open the knockout for cabling
- (6) Attach the network cable(s) to the option card's Ethernet port(s) as required, and route the cable(s) out of the inverter along with other control-level wiring



- (7) Reinstall the inverter's front cover and secure the cable(s)



G500ETH Quick Installation Guide

2. Configure the network settings

- (1) Power on the inverter
- (2) Modify the network parameters via the inverter keypad. Ensure that the IP address is unique and the network settings are compatible with the targeted Ethernet network.

Function Code	Description
P16.02	IP address most significant octet
P16.03	IP address high octet
P16.04	IP address low octet
P16.05	IP address least significant octet
P16.06	Subnet mask most significant octet
P16.07	Subnet mask high octet
P16.08	Subnet mask low octet
P16.09	Subnet mask least significant octet
P16.10	Default gateway address most significant octet
P16.11	Default gateway address high octet
P16.12	Default gateway address low octet
P16.13	Default gateway address least significant octet

- (3) After modifying the network parameters, power-cycle the inverter for the new settings to take effect

3. Installation is complete

4. Additional G500ETH documentation and other resources can be found on the G500ETH product page at:

<http://www.galt.iccdesigns.com/g500eth>

5. Refer to the G500ETH Instruction Manual for additional details or contact Galt Electric for technical support